



Battery hand-held clinch unit ULBG-452-18

Technical Data

Battery Hand-Held Unit with C-frame in Steel or Aluminum.

Press force:	35 kN
Stroke:	18mm
Weight with Alu C-Frame :	3,2kg
One hand trigger	
Reset button	
Monitoring of achieved press force	
Charger:	18V
Battery, 2 pcs	1,5Ah Lilonen
Bag with shaped inside	
C-Frame throat depth (TD):	30 mm
Adapter, interface to BTM's C-frames and scissors units	

BTM
SCANDINAVIA AB

CREATING CLINCHING SOLUTIONS

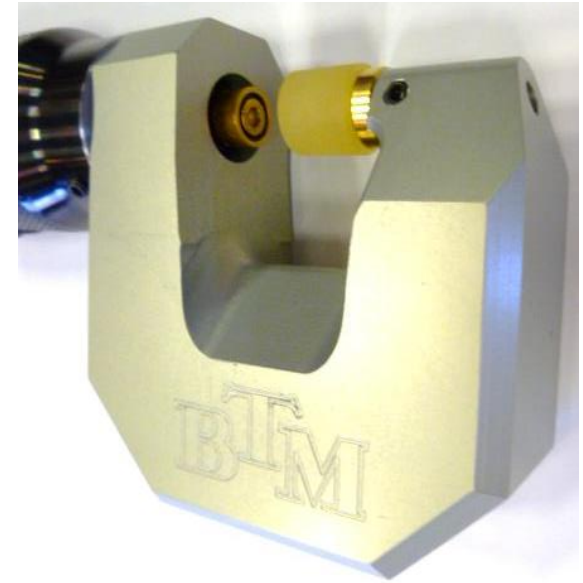
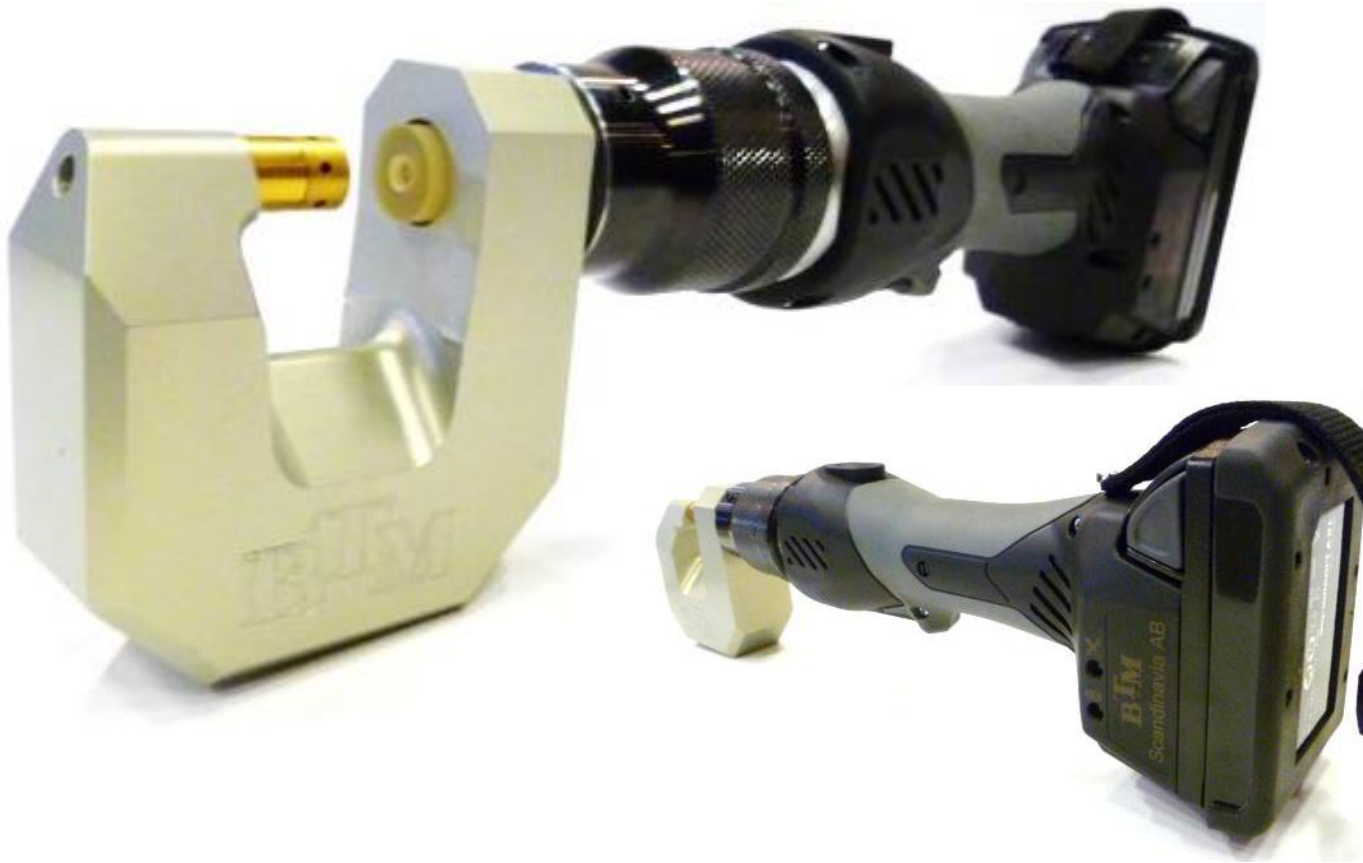
Battery hand-held clinch unit ULBG-452-18



BTM
SCANDINAVIA AB

CREATING CLINCHING SOLUTIONS

Battery hand-held clinch unit ULBG-452-18



BTM
SCANDINAVIA AB

CREATING CLINCHING SOLUTIONS